



ROTARY BEACON



The Morehead City Evening Rotary Club



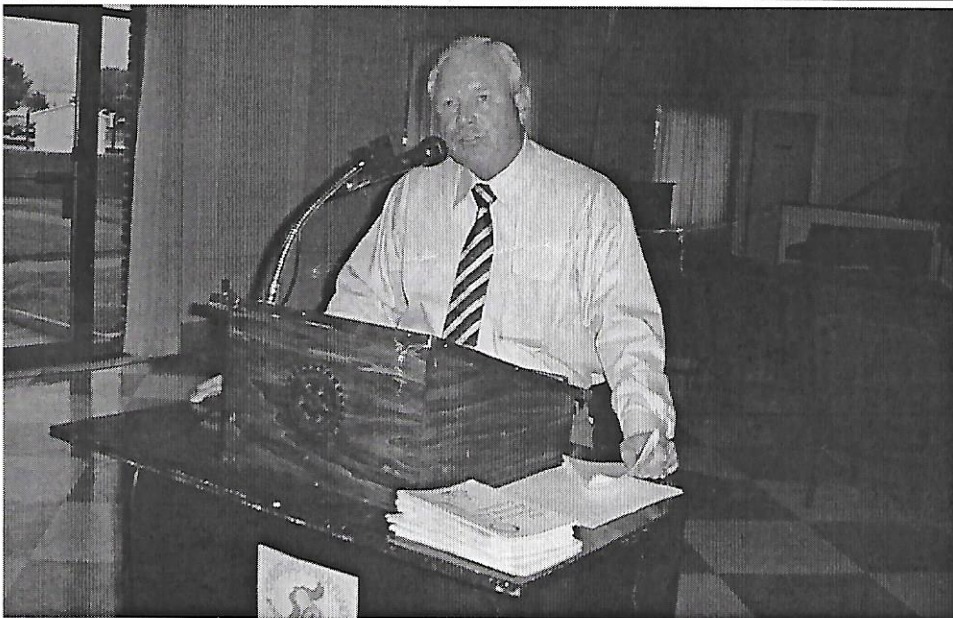
Chartered May 19, 1925



October 11, 2007

Rotary Motto: Service Above Self

Volume 2, Issue 16



Storm Water Runoff Poses Grave Problems for Carteret County

John Langdon, county manager, defined storm water runoff as water from rainstorms or snowmelts that flows over the land rather than evaporating or soaking into the ground. In the undeveloped landscape, vegetation slows the runoff of storm water and allows more time for percolation into groundwater supplies. However, in developed areas where the natural landscape has been covered with pavement and non-porous surfaces (i.e. homes, businesses, streets and parking), the character of the runoff changes dramatically, often resulting in increased flooding, reduced water quality, and loss of habitat and recreational use.

John went on to say that storm water pollution is a challenging water quality problem. Unlike pollution from industry or sewage treatment facilities, which is caused by a discrete number of sources, storm water pollution is caused by the daily activities of people everywhere. Rainwater and snowmelt runs off streets and pick up fertilizers, dirt, pesticides, oil and grease, and many other pollutants from our lawns, farms, and construction and industrial sites, on the way to our rivers, lakes and coastal waters. Storm water runoff is our most common cause of water pollution, because storm water pollution is caused by so many different

activities.

Traditional regulatory controls will only go so far. Fortunately it doesn't take much to help prevent pollution. Unless the problem of storm water runoff can be sloved, it will restrict growth in Carteret County's housing development

The Four-Way Test

1. Is it the TRUTH?
2. Is it FAIR to all concerned?
3. Will it build GOODWILL and BETTER FRIENDSHIPS?
4. Will it be BENEFICIAL to all concerned?"



Ace of Spades A New Game



Started



Last Week

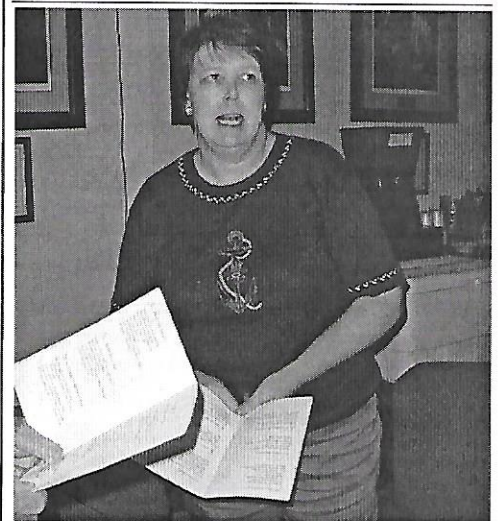
TONIGHT'S JACKPOT

\$22.00

(Draw the Ace of Spades and Win a miminum of \$100.00)

TONIGHT'S PROGRAM

Jim Chalk has the program tonight. His guest speaker is Rodney Kemp. Rodney will give the history of the Salter Path property from the time it was owned by Theodore Roosevelt until it was passed to Alice Green Hoffman whose neice married Roosevelt's son. Sounds like an interesting program.

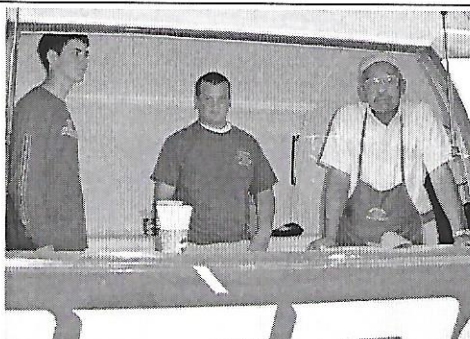
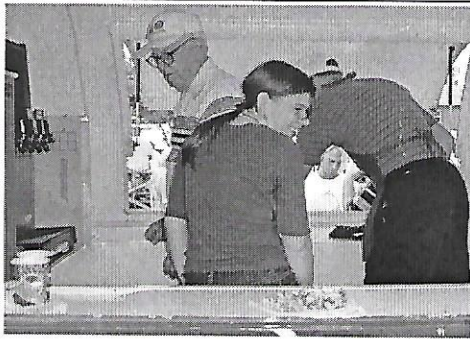


Valerie Ballard

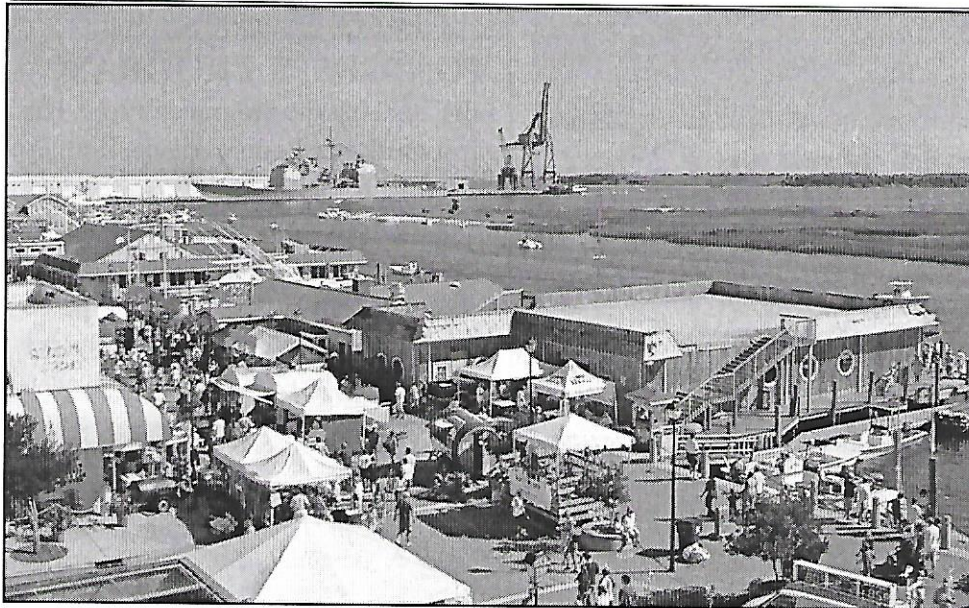
Valerie adds her soprano voice to the Rotary Choir (Valerie is Bet Dowty's daughter).

Program Schedule

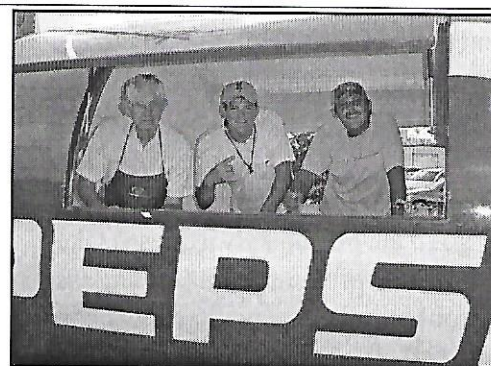
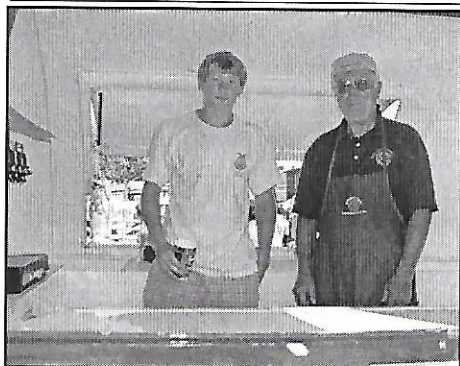
<u>Date</u>	<u>Rotarian</u>	<u>Ave. of Service</u>
October 18	Darden Eure Jr.	Comm. Service
October 25	Shelby Freeman	Comm. Service
November 1	Claude Fournier	Inter. Service
November 8	Jim Garner	Inter. Service
November 15	Albert Gaskill	Inter. Service
November 22	Thanksgiving	No meeting



Everyone is doing his/her part to make the Seafood Festival successful!



The Seafood Festival as seen from atop the ferris wheel on a Sunday afternoon after crowd had thinned.



A winning combination: Rotarians and students working together at the Seafood Festival to earn funds to make the community a better place to live.

Morehead City Rotary Board of Directors

PRESIDENT
Neil Whitford

VICE-PRESIDENT
Council Renfrow

SECRETARY
James Walker

TREASURER
David Hall

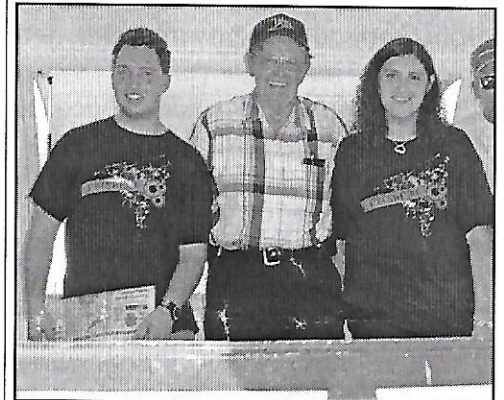
PAST PRESIDENT
Neil Whitford

Avenues of Service Directors
Dick Rogers, Club Service
Jim Chalk, Com. Service
David Bradley, Inter. Service
Vacant Voc. Service

Sergeant-at-Arms,
Bet Dowty

Members

Andy Couch	Earl Lewis
Darden Eure, Jr.	David Lindsay
Claude Fournier	John Nelson
Shelby Freeman	Tom Noe
Jim Garner	Herb Phillips
Albert Gaskill	Jim Phillips
Sonny Geer	Demus Thompson
Jim Gregson	John Van Horn
Stanley Harrell	Bill Ward



UNSUNG HERO

The Rotary Beacon wishes to take this opportunity to thank Bet Dowty for coordinating the work schedule for the Seafood Festival with West Carteret High School. Bet spent three days ensuring that things went well and that all Pepsi booths were manned. He did a herculean job. Our hats are off to him. Bet is one of Rotary's unsung heroes who works behind the scenes providing the elbow grease that allows our club to function smoothly and efficiently.